

The WiNSpace News



Issue 8: June 2021

Go to the: [WiNSpace Website](http://winspace.org.uk) [click here](#)

Your support is urgently needed in June and July

During the week of the 7th June the Winscombe and Sandford Parish Council will be distributing their 3 monthly information newsletter 'The Occasional'. As we said in Issue 7 there will be an article about our request for the Parish Council to financially support the project. For this to be taken to the next stage the PC needs to see how much support in the Parish there is for it, hence the need for a survey.

What are the WiNSpace Team doing to encourage a positive response?

We have now planned an awareness campaign to encourage everyone in the Parish to complete the survey and of course we would love you to say YES to the questions in the survey. Therefore, from next week you will hopefully see posters, banners and leaflets appearing around the parish and on your doormat. We will also be out and about talking to parishioners, answering their questions. Finally, we will be working the social media channels to further increase awareness - so 'share away' if you see a post. Please, when the survey details arrive, complete the survey and reply YES to the questions. It's the only way to make the new centre a reality, (Thanks in Advance).

Time to Say YES WiNSpace

Have you completed your survey yet?

Winscombe and Sandford Parish Council Survey

winspace.org.uk

a modern venue for the Parish

WCA Winscombe Community Association

So why do we need the Parish Council to provide funding?

	Source	Value	Current status
1	Existing assets	£250,000	£270k Valuation obtained (HMH)
2	S106/Cil funding	£400,000	300k committed – (Redrow)
3	Current reserves	£150,000	Already raised (£50k paid out)
4	Grants	£22,400	£22,400 received to date
5	PC Grant	£250,000 ¹	Paid from Precept
6	Loan via PC	£250,000 ¹	Paid by WCA from centre income
7	National Grants	£500,000 ²	Lottery Application submitted
8	Community giving	£128,000 ²	Fund raising and Donations
9	Funding Partners	£250,000 ²	Local Businesses Grants
	Target Total	£2,200,000	£742,000 raised so far

The estimated cost of the Project is £2.2M of which we already have identified over 30% (in green).

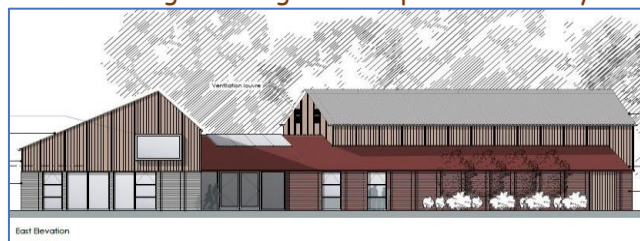
So we are now looking for the next section of funding which is what the Parish Council survey is all about. As a reminder, WiNSpace are asking for two loans of £250,000 each, a Parish Council funded loan repaid through an increase in the Parish council charge (estimated at £6 per household per year) and the other repaid by the WCA, both repaid over 30

years, just like a mortgage. The next major funding source for the project is a National Lottery Grant of £0.5M, for which an application has been submitted.

One of the most important aspects which the Lottery is asking is how much 'local' money and support is going into the project. Therefore, it is clear to the WiNSpace project team that if the PC gets a negative response either by a small return or by only a minority in favour, it is likely that also the National Lottery Grant won't happen leaving us £1M short and a likely end to the WiNSpace project as we know it. (hence the 'No' dead end in the graphic for the posters)

Latest planning application news

I'm sorry we are still in the validation process. The Planning Department asked for an emergent Bat survey of the buildings (in addition to what we've done). This needed to be completed during good weather, which has been rather lacking in May. However the good news is this has been achieved with good results (i.e.. no nesting bats) so hopefully we'll get started on the planning process in June. We'll let you know when this starts



.Help Needed: Please Please Please complete the PC survey and encourage all your friends and neighbours within the Parish to also do so - let's make it a reality together

Don't forget all the planning documents are on our Website

WiNScombe
newSPACE

Issued by the WiNSpace committee and WCA Trustees
To get in contact just send an email to Info.winspace@gmail.com

a modern venue for the village