



Saturday 12th September 2026

Winscombe Community Centre

Gates open 1:30pm – 4pm

Entry £1 adult, 50p children & concessions

Free Schedule

Section 1 – Creative Arts

One entry per class. Please state clearly if your entry is made from a kit. The WCA is not responsible for any damage or loss to the entries during or after the fair. * see pattern attached

- A1. Watercolour painting
- A2. Drawing (such as pencil, charcoal, or mixed media)
- A3. Bag made from recycled material
- A4. Handmade greetings card or paper item
- A5. Hand-knitted or crocheted article
- A6. Item of patchwork or quilting
- A7. Item of cross stitch, tapestry or embroidery
- A8. Soft craft item
- A9. Twiddlemuff * for Dementia. (Knitted or Crochet) Donated to local charity at end of show
- A10. Hard craft item (such as pottery, items made from wood, metal, or glass)
- A11. An original short story or descriptive piece - 1000 words maximum. Theme "The Garden"
- A12. A Poem or Haiku. Theme "The Garden"

Junior Section 1 – Creative Arts

One entry per class. Children's own, unassisted work only. Maximum age 12. Judged in two age categories (7 & under and 8-12s)

- AJ3. Painting using any media on the theme "one month for a calendar"
- AJ14. Drawing (any media on A4 paper) on the theme "in my garden"
- AJ15. Handmade soft craft item (such as a soft toy, knitted item, patchwork, or sewn article)
- AJ16. Use Lego to build an alien (NOT from a kit)
- AJ17. Create a room in a shoebox
- AJ18. Make a flower from recycled materials
- AJ19. A poem or haiku. Theme "The Garden"
- AJ20. Handwriting – write the poem below on A4 paper, to be judged on handwriting, may be decorated

*The Lesser Lynx
The Laughter of the Lesser Lynx is often insincere:
It pays to be polite, he thinks, If Royalty is near.
So when the Lion steals his food Or kicks him from behind,
He smile, of course – but oh, the rude
Remarks that cross his mind!*

Section 2 – Cakes & Preserves

One entry per class. All entries must be displayed on paper doilies or paper plates. Where an entry has a recipe this must be followed. Preserves are to be filled to the top and labelled with date made and the content. Screw top jars without paper discs or cellophane tops with waxed paper discs will be allowed.

B21. Victoria sandwich (Recipe)

B22. Gingerbread (Uncut)

B23. Swiss Roll

B24. 6 Fruit scones

B25. Loaf of bread, White, Brown or Granary (Not machine made)

B26. Best shop bought cake with a makeover

B27. Jar of jam or marmalade

B28. Jar of lemon or orange curd

B29. Jar of jelly any flavour

B30. Jar of chutney (Over 3 months old)

Note: There is also a Honey Cake class, see Honey Section for recipe & class no.

Victoria Sandwich - 2x 18cm (7") round tins. Jam filling only. Top left plain.

175g (6oz) Self-raising flour, 175g (6oz) Margarine, 175g (6oz) Caster sugar, 1 ½ tsp Baking powder, 3 eggs.

Method: Use the all-in-one method

Junior Section 2 – Cakes & Preserves

One entry per class. All cakes must be displayed on paper doilies or paper plates. Where a cake states (recipe) this must be followed. Maximum age 12. Judged in two age categories (7 & under and 8-12s)

BJ31. Small decorated Clown pizza

BJ32. Five decorated flower cup-cakes - judged on decoration only

BJ33. Decorated TV cartoon theme sponge cake - judged on decoration only

BJ34. Five chocolate chip cookies (recipe)

BJ35. Five Gingerbread people

Chocolate Chip Cookies - 85g (3oz) Butter, 85g (3oz) Granulated sugar, 85g (3oz) Brown sugar, 175g (6oz) Self-raising flour, 1 beaten egg, 1 pkt Chocolate drops (milk or plain)

Method: Cream butter and sugar. Beat in egg. Stir in flour and chocolate drops. Mix well. Place in teaspoonfuls on greased baking sheet. Bake until golden brown (approx. 12-15 minutes) 190C/370F/gas 5

Section 3 – Flowers & Floral arrangements

One entry per class. All flowers must be grown by the exhibitor. Maximum space allowed for floral arrangements is 50cm wide x 50cm deep. Height unlimited. No artificial plant material may be used. Bases and drapes are permitted. Flowers & materials for floral arrangements in categories F51 & F52 may be from a garden or florist.

- F36. Dahlia - small cactus 115-170mm – Vase of 3 blooms
- F37. Dahlia - Large cactus 200-260mm - 1 bloom
- F38 Dahlias – pompom – Vase of 3 blooms
- F39. Dahlias -other variety – Vase of 3 blooms
- F40. Dahlia – maximum 220mm – 1 bloom
- F41. Dahlia – other variety – 1 bloom
- F42. Marigolds – vase of 5 blooms
- F43. Chrysanthemum – single bloom
- F44. Cactus in pot
- F45. Succulent in pot
- F46. A Pot plant
- F47. Garden flowers – 6 different stems
- F48. Rose of a single variety – 3 stems - one stem in bud, one partially open and one fully open
- F49. Fuchsia flowers- one or more varieties - 6 displayed (board)
- F50. Any one variety of flower not covered by another category – 6 stems
- F51. A floral arrangement using the theme “My garden”
- F52. An arrangement of flowers in a basket maximum size 40cm x 40cm

Junior Section 3 – Flowers & Floral arrangements

One entry per class. All flowers must be grown by the exhibitor. Maximum space allowed for floral arrangements in 50cm wide x 50cm deep. Height unlimited. No artificial plant material may be used. Bases and drapes are permitted. Maximum age 12. Judged in two age categories (7 & under and 8-12s)

- FJ53. A vase of at least three mixed garden flowers
- FJ54. An arrangement of fresh greenery
- FJ55. A miniature garden

Section 4 – Fruit & Vegetables

One entry per class. All fruit must be grown by the exhibitor. Can be any variety unless specified. All vegetables must be grown by the exhibitor and be this year's growth only.

- V56. Eating apples – 5
- V57. Cooking apples – 5
- V58. Apples – 3 heaviest
- V59. Plums – 9
- V60. Vase of mixed herbs
- V61. Grapes – 1 bunch
- V62. Any other edible fruit – 1 dish
- V63. Potatoes -3 white
- V64. Carrots – 3 stump rooted
- V65. Courgettes -3 – maximum 200mm
- V66. Tomatoes - Any
- V67. Runner beans – 6
- V68. Any other vegetable not listed elsewhere
- V69. Marrow – heaviest
- V70. Green runner bean – longest

Junior Section 4 – Fruit & Vegetables

One entry per class. Maximum age 12. Judged in two age categories (7 & under and 8-12s)

- VJ71. The best vegetable you have grown
- VJ72. Animal made from vegetable and/or fruit

Section 5 – Photography

One entry per class. Digital manipulation is permitted which remains faithful to the original image. Prints must be no bigger than A5 and not mounted, except where stated. Where a class states “mounted” this should be on thin card.

P73. A good view

P74. Building or architecture

P75. Green

P76. An animal portrait

P77. Wildlife

P78. A portrait – of a person or group of people

P79. The one that got away

P80. What an adventure – up to 3 images that tell a story – mounted

P81. A close up

P82. Blur

P83. From above

P84. Black and white or monochrome

P85. Windows

P86. A mounted collection of 5 photographs with the theme Displayed

P87. A mounted collection of 5 photographs on the theme Travel

Junior Section 5 – Photography

One entry per class. Maximum age 12. Judged in two age categories (7 & under and 8-12s)

PJ88. “Green” - a series of up to five photographs that tell a story - mounted

PJ89. A photograph that features an animal

PJ90. A photograph about being on holiday

PJ91. Five photographs on any subject but with the theme displayed - mounted

Section 6 – Honey

One entry per class. Honey & wax must be from exhibitors' own apiary, except for honey used in the honey cake. Jars must be matching, minimum net weight 228g and show labels affixed 2cm from base.

H92. Two jars of Liquid honey - light, medium or dark

H93. Two jars of set honey (Soft Set or Naturally Crystallised)

H94. Three 28g (1oz) approx. Beeswax blocks, all uniform shape. Presented on a flat card.

H95. One shallow frame of honey suitable for extracting. Presented in a frame show case, glazed on both sides.

H96. Honey cake – Open to all (recipe)

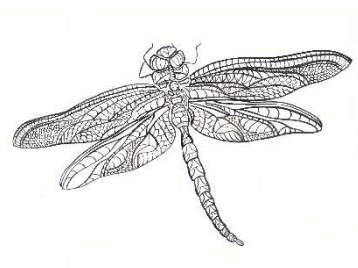
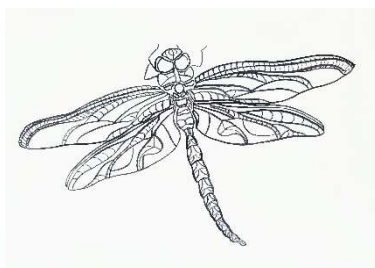
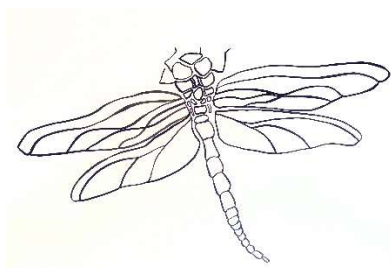
Honey Cake - 200g/7oz self-raising flour, 175g/6oz liquid honey, 110g/4oz soft brown sugar, 140g/5oz butter, 2 medium sized eggs, 1 tablespoon of water.

Place butter, sugar, honey and water in a saucepan and gently heat, stirring all the time. When the butter has melted, remove the pan from the heat and allow contents to cool to blood temperature. Gradually beat in the eggs, add sieved flour and mix until smooth (do not over mix). Turn the mixture into a greased and lined 16 to 19cm (6.5 to 7.5 inch) diameter cake tin. Preheat the oven to 180°C/350°F or gas mark 4. Bake for one hour or until risen and firm to the touch. Cover the top, if necessary, to prevent browning too much. Leave to cool in the tin for 5 minutes and then turn out onto a wire rack to cool.

Section 7 - Colouring Competition

The colouring competition has 3 age categories. 0-7 year olds, 8-12 year olds and adults (anyone 13+). Please download and print the correct image from the Winscombe Community centre webpage at www.winscombeca.org.uk or use the QR code at the end of this programme. Colour it in, on the back write your name, address, age & phone number and bring it along to the show before 9.30am for your chance to win. Good Luck!

Please take entries to the Creative arts section.



C97. 0-7 years

C98. 8-12 years

C99. 13+

Rules of the Show

Who can enter - Exhibitors must be amateurs and residents of the parish of Winscombe and Sandford, members of the Winscombe & Sandford Horticultural Society or have children at a Primary or Nursery School based in Winscombe or Sandford.

What can be entered - Exhibits must be the bona fide production of the exhibitor and free of all labelling, except where stated. All fruit and vegetables must be grown by the exhibitor and be this year's growth only.

Junior entries – Junior exhibits must be their own, unassisted work. Maximum age for junior classes is 12. Junior sections will be judged in 7 and under and 8 to 12 age categories, based on their age on the day of the show. Junior classes have the reduced entry fee of 25p per entry. Exemptions available for children with special educational needs. Please contact Jackie Warren - 07811292909 for advice.

Display containers - Exhibitors must provide their own containers and receptacles for display.

Recipes & Pattern - Where the class states (recipe/pattern) this must be followed exactly. Those not following the details will be disqualified.

Entry forms - Entries must be on an official entry form, one per person, with name, address, telephone number & email address clearly shown. Only 1 entry per class. Extra forms can be downloaded from the Winscombe Community Centre webpage at www.winscombeca.org.uk the Winscombe Community Centre Facebook page or by using the QR Code at the end of the programme. Entry forms must be submitted to Mary Stone, 13 Brae Road, Winscombe by 8pm on Sunday 6th September at the latest.

Show day timings - On the day of the Show, the Community Centre will be open from 8am for exhibits to be displayed. All exhibits must be staged by 9.30am. Exhibitors must collect place tickets from the Entry Secretary who will be located by the main entrance of the new centre. (WiNSpace)

Judging - Judging will take place between 10am and midday, during which time no unauthorised persons will be allowed into the exhibition. The judges' decisions will be final. Certificates, rosettes and other prizes will be awarded at the discretion of the judges.

Care of your exhibits - Exhibits remain the property of the exhibitor. Every possible care will be taken of exhibits, but the Community Association will not be responsible for any loss or damage that may occur. Twiddlemuff will be donated to a local charity.

Collecting your exhibits - Exhibits must remain staged until 4pm but must be removed by 4.30pm. Please remove all your exhibits by this time, any exhibits left behind will be disposed of. All Twiddlemuff entries will be donated to a local Dementia charity.

Trophy Winners - Holders of trophies will be responsible for their safe keeping whilst in their possession and must return them to the Trophy Secretary by August the following year.

Knitted Twiddlemuff Instruction Sheet

1. Materials

This muff pattern is perfect for using up left over and odd balls of wool.

Needles: 8mm circular or 6.5mm straight needles.

2. Directions

Cuff: Cast on 45 stitches using 2 strands of double knitting wool or 1 strand of chunky wool (one plain colour works best). Work in stocking stitch (knit a row, purl a row) for 11 inches.

Muff Body: Continue with stocking stitch, but use up oddments of various textures of wool such as chunky, mohair, ribbon or various types of stitch pattern etc. until the work measures 23 inches. Cast off.

3. Finishing

If working with straight needles, lightly iron the long strip, then neatly join the sides together using edge to edge stitch (with the knit side facing out)

Turn inside out and push the one-colour cuff up inside the muff body

Sew the two ends together, again using a neat edge to edge stitch.

4. Decoration

Now is the time if you want to decorate the muff, inside and out, with ribbons, flowers, zips, loops, buttons, etc. Knit a separate pocket for a favourite photo or a hanky

Be creative, but make sure each item is **securely** attached.

Washing instructions: hand wash at 30°C – carefully!

Leave to dry flat. No dryers



Crocheted Twiddlemuff Instruction Sheet



Crocheted Twiddlemuff are made in two layers and each layer is worked in the round and in a spiral with no need to join rounds unless instructed to do so. In the outer layer you could carry along strands of textured yarns - mohair, ribbon, chain and boucle in some rows. The bobbles are optional; you can work rows of bobbles, individual bobbles, or none at all in the outer layer

Instructions are given for two different diameters of muff and length can be adjusted by working more or fewer rows.

Finished dimensions: S/M 10.5" long by 7" diameter, laid flat.
M/L 10.5" long by 7.5" diameter, laid flat.

Yarn: Aran

Hook: 8mm or size required for tension

Tension: 10 stitches and 9 rows to 4"

Abbreviations: ch – chain, dc - double crochet,
htr - half treble crochet mb - make bobble

Make bobble (mb): [Yarn over hook, hook through stitch, yarn over and pull through 2 loops] 5 times in same stitch, yarn over and pull through all 6 loops on hook, 1 ch to secure (ch does not count as a stitch for next rnd).

Inner/ outer sleeve: (make 2)

With Aran yarn and 8mm hook chain 36 (40). Taking care not to twist the chain slip stitch into furthest chain from hook to make a ring.

Rnd 1 (RS): Ch 1 (does not count as first stitch), 1 htr in same ch, 1 htr in each ch to end of rnd, place marker if using, 36 (40) sts.

Rnd 2: 1 htr in each st to end, move marker to denote new end of rnd, 36 (40) sts. Rnds 3-21: Repeat rnd 2.

Rnd 22: 1 htr in each st until 1 st remains, 1 dc in next st, sl st in next st.

Fasten off and break yarn leaving a long tail (at least 2 metres) for finishing off.

To make a bobble round mb in next st, dc in next st to end of rnd.

Make bobble (mb): [Yarn over hook, hook through stitch, yarn over and pull through 2 loops] 5 times in same stitch, yarn over and pull through all 6 loops on hook, 1 ch to secure N.B. following a bobble round remember that the chain that secures each bobble does not count as a stitch and should be skipped over on the next round.

Decorate inner and outer sleeve as desired with buttons, zips, beads and ribbons. **Please make sure that**, all sewn-on twiddles are securely stitched in place, and all ends are securely woven in.

Join inner and outer sleeves

Turn the inner sleeve inside-out and slip it inside the outer sleeve. Make sure that you have one long yarn tail at either open end. Using 8mm hook and long yarn tail join the inner and outer sleeve together by working a round of dc, working into the starting chain of one layer and the final round of the other. Do this at each end to form a double-layered tube. Weave in all ends.

Dog Show Schedule & Arena Events

Entry Free £2.00 per Dog, payable on the day at registration, times below. You may enter as many classes as you like for this amount.

- | | |
|------|-------------------------------------|
| 1:45 | Waggiest Tail
Best Rescue Dog |
| 2:15 | Village Choir |
| 2:45 | Longest Sit & Stay
Biggest Smile |
| 3:45 | Longest Ears
Best Dressed Dog |
| 3:15 | Cider and Baguette competition |
| 3:45 | Spot the Oddity winner announced |

Village Show QR Code

